

Leon County
Investment Report
Quarter Ended September 30, 2012

Leon County
Table of Contents
Quarter Ended September 30, 2012

	<u>Page</u>
Summary Portfolio Review	
Portfolio Performance and Characteristics for the Internal and External Investment Portfolio	4
Maturity Distribution for the Internal and External Investment Portfolio	5
Asset Allocation for the Internal and External Investment Portfolio	6
Ratings Distribution for the Internal and External Investment Portfolio	8
Cutwater Asset Management Portfolio Review	
Portfolio Performance and Characteristics for the Cutwater Managed Portfolio	10
Maturity Distribution for the Cutwater Managed Portfolio	11
Asset Allocation for the Cutwater Managed Portfolio	12
Ratings Distribution for the Cutwater Managed Portfolio	14
Footnotes	15
Additional Disclosure	16

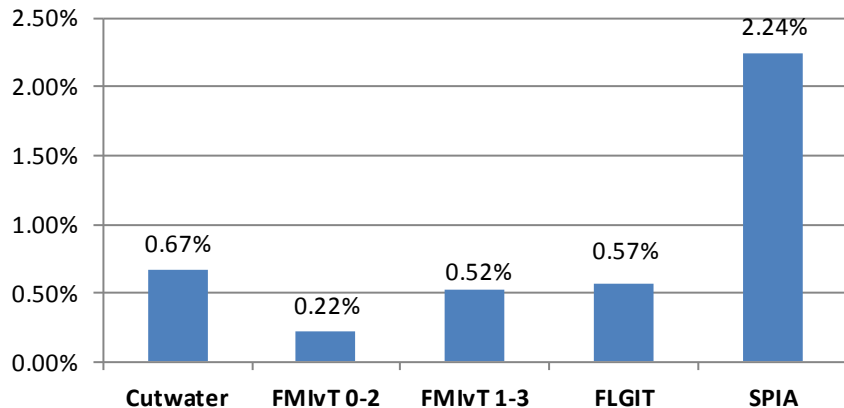
Leon County
Summary Portfolio Review
Quarter Ended September 30, 2012

Leon County

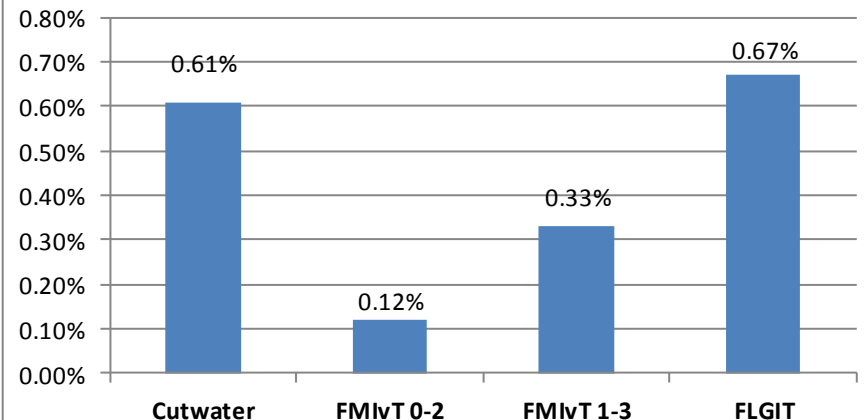
Portfolio Performance and Characteristics for the Internal and External Portfolio Quarter Ended September 30, 2012

Portfolio Name	Quarter End Balance	Quarterly Return	Yield	Effective Duration
Cutwater Managed Portfolio	76,408,431	0.61%	0.67%	1.74
Florida Municipal Investment Trust 0-2 Years (FMIVT 0-2)	49,897	0.12%	0.22%	0.83
Florida Municipal Investment Trust 1-3 Years (FMIVT 1-3)	27,382,710	0.33%	0.52%	1.64
Florida Local Gov Investment Trust (FLGIT)	14,499,655	0.67%	0.57%	1.84
Florida Treasury SPIA ⁽¹⁾	54,581,469	N/A	2.24%	2.58
Certificates of Deposit	0	N/A	N/A	N/A
State Board of Administration Pool (SBA)	0	N/A	N/A	N/A
Money Market-Holdings	0	N/A	N/A	N/A
	172,922,161	0.55%	1.13%	2.00

Yield as of September 30, 2012



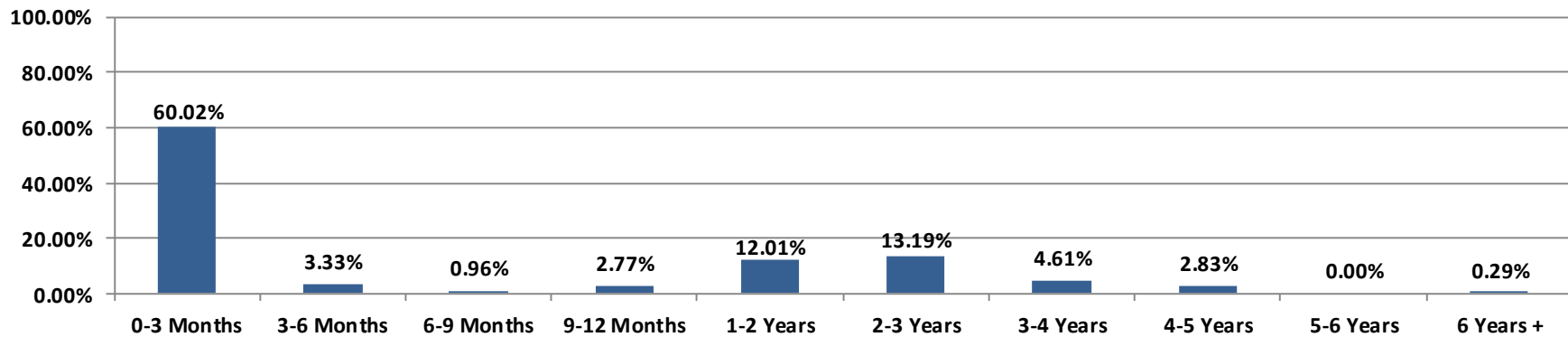
Quarterly Total Return



Leon County
Maturity Distribution for the Internal and External Portfolio
Quarter Ended September 30, 2012

<u>Maturity Distribution</u>	<u>Assets</u>	<u>Percent of Portfolio</u>
0-3 Months	100,699,008.83	58.23%
3-6 Months	6,009,904.65	3.48%
6-9 Months	1,733,208.71	1.00%
9-12 Months	4,995,506.91	2.89%
1-2 Years	21,690,309.97	12.54%
2-3 Years	23,823,480.75	13.78%
3-4 Years	8,331,501.09	4.82%
4-5 Years	5,112,964.31	2.96%
5-6 Years	-	0.00%
6 Years +	526,275.44	0.30%
	<u>172,922,160.66</u>	<u>100.00%</u>

Portfolio Maturity Distribution

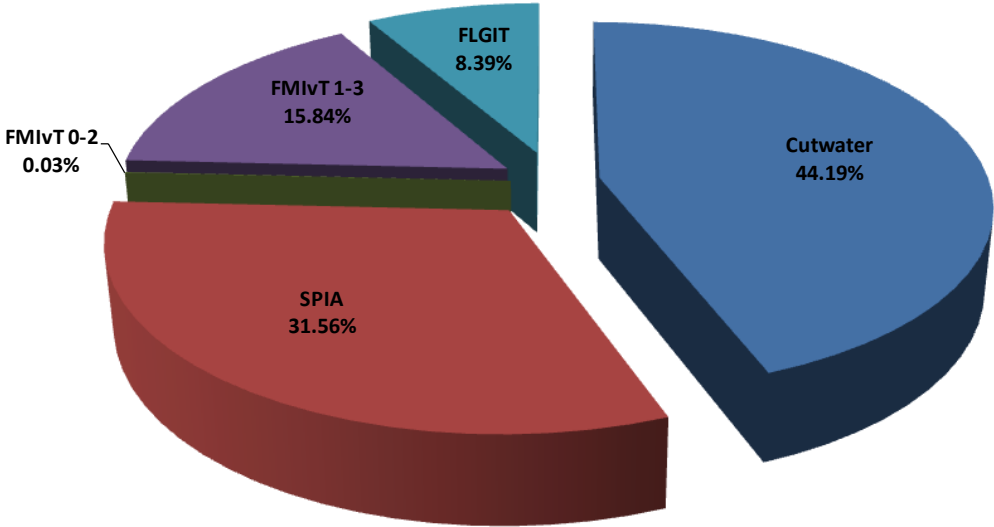


Leon County
 Asset Allocation for the Internal and External Portfolio
 Quarter Ended September 30, 2012

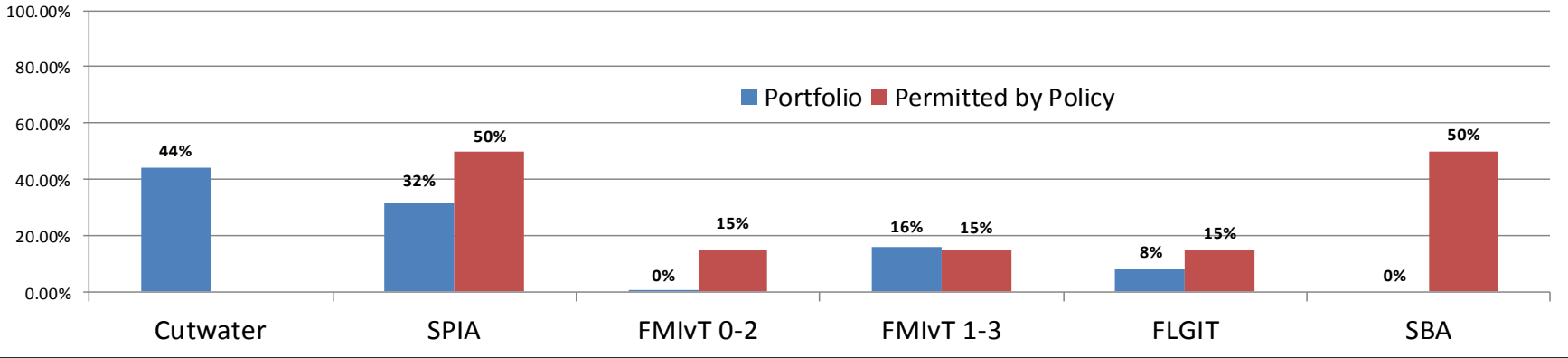
Asset Allocation	Assets	Percent of Portfolio	Policy ⁽²⁾
Cutwater Managed Portfolio	76,408,430.58	44.19%	NA
SPIA	54,581,468.58	31.56%	50%
FMIvT 0-2	49,896.79	0.03%	15%
FMIvT 1-3	27,382,710.20	15.84%	15%
FLGIT	14,499,654.51	8.39%	15%
SBA	-	0.00%	50%
Total Portfolio	172,922,160.66	100.00%	

Leon County Asset Allocation for the Internal and External Portfolio Quarter Ended September 30, 2012

Portfolio Composition



Portfolio vs. Investment Policy Asset Allocation



Leon County

Ratings Distribution for the Internal and External Investment Portfolio Quarter Ended September 30, 2012

Short Term Rating Distribution

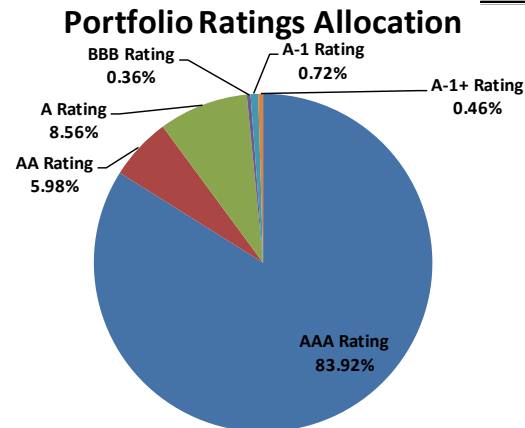
	Assets	Percent of Portfolio
A-1+	798,800.88	0.46%
A-1	1,248,676.38	0.72%
	2,047,477.26	1.19%

Long Term Rating Distribution

AAA Rating	144,709,832.09	83.92%
AA Rating	10,304,192.18	5.98%
A Rating	14,751,324.75	8.56%
BBB Rating	615,832.87	0.36%
BB Rating	-	0.00%
B Rating	-	0.00%
<B Rating	-	0.00%
	170,381,181.89	98.81%

Total Portfolio

	172,428,659.15	100.00%
--	----------------	---------



Leon County
Cutwater Asset Management Portfolio Review
Quarter Ended September 30, 2012

Leon County

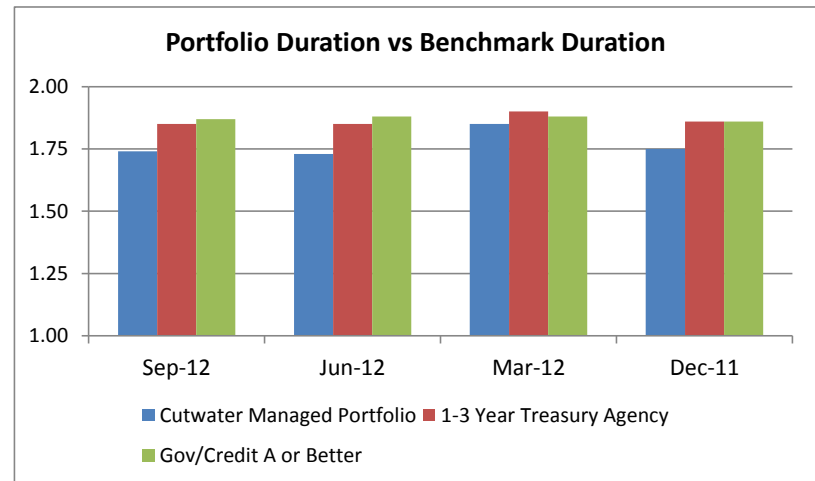
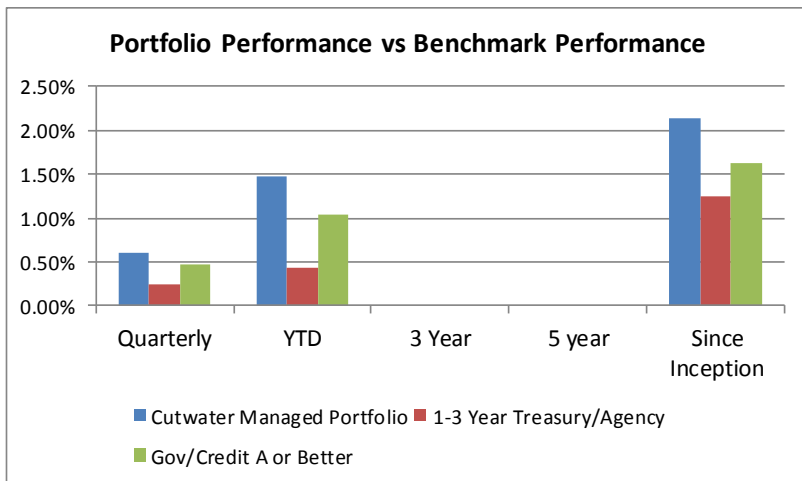
Portfolio Performance and Characteristics for the Cutwater Managed Portfolio Quarter Ended September 30, 2012

Investment Portfolio	Ending Balance
Weighted Market Yield	0.67%
Weighted Yield on Cost	1.05%
Weighted Coupon	1.52%

Investment Portfolio	Ending Balance
Market Value with Accrued	\$ 76,408,430.58
Amortized Cost with Accrued	\$ 75,769,530.46
Accrued Interest	\$ 211,341.24

Performance	Quarterly	YTD	3 Year	5 year	Since Inception
Investment Portfolio	0.61%	1.48%			2.14%
1-3 Year Treasury/Agency Index	0.25%	0.43%			1.25%
US Corporate/Government - A or Better Index	0.48%	1.04%			1.62%

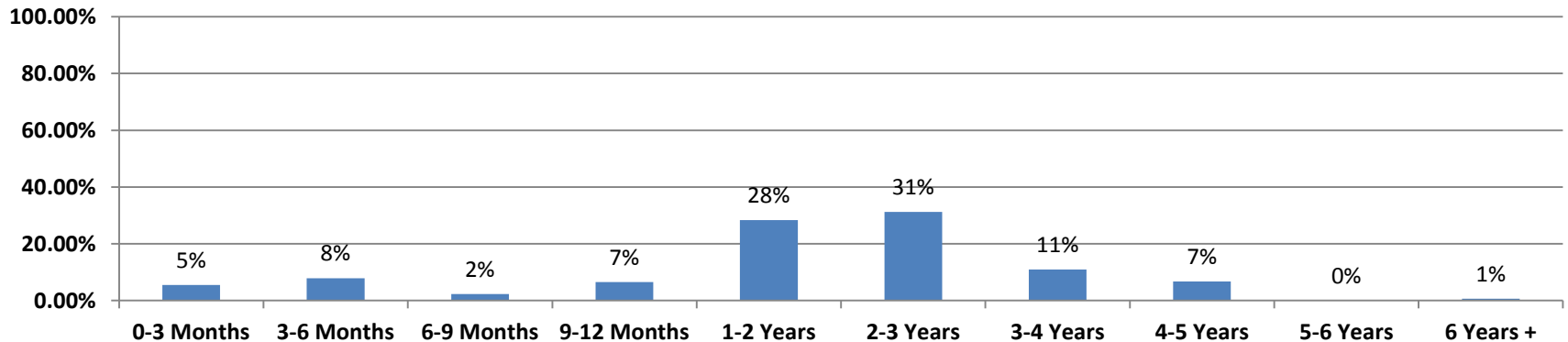
Duration	Sep-12	Jun-12	Mar-12	Dec-11
Investment Portfolio	1.74 Years	1.73 Years	1.85 Years	1.75 Years
1-3 Year Treasury/Agency Index	1.85 Years	1.85 Years	1.90 Years	1.86 Years
US Corporate/Government - A or Better Index	1.87 Years	1.88 Years	1.88 Years	1.86 Years



Leon County
Maturity Distribution for the Cutwater Managed Portfolio
Quarter Ended September 30, 2012

<u>Maturity Distribution</u>	<u>Assets</u>	<u>Percent of Portfolio</u>
0-3 Months	4,185,278.75	5.48%
3-6 Months	6,009,904.65	7.87%
6-9 Months	1,733,208.71	2.27%
9-12 Months	4,995,506.91	6.54%
1-2 Years	21,690,309.97	28.39%
2-3 Years	23,823,480.75	31.18%
3-4 Years	8,331,501.09	10.90%
4-5 Years	5,112,964.31	6.69%
5-6 Years	-	0.00%
6 Years +	526,275.44	0.69%
	76,408,430.58	100.00%

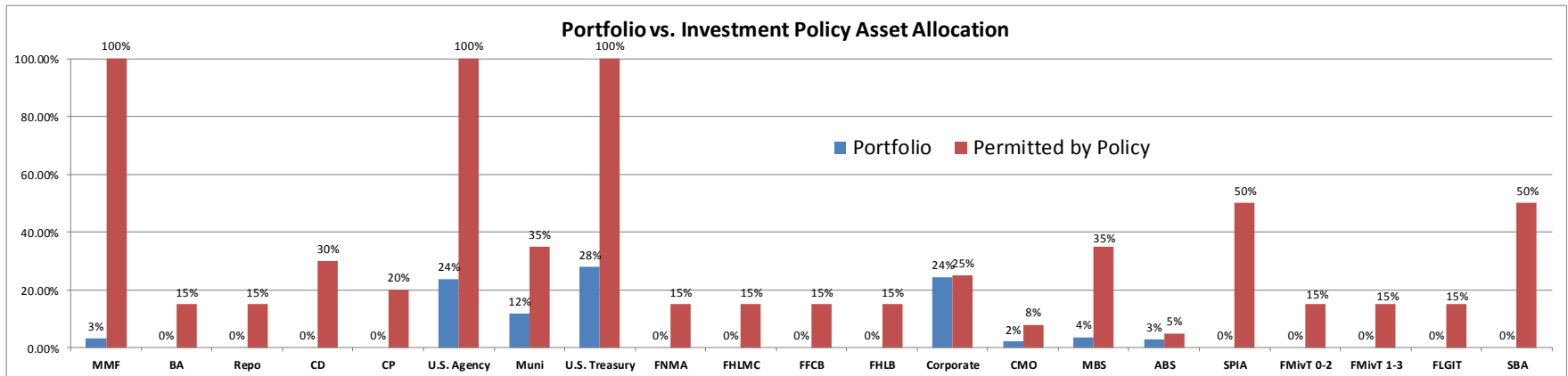
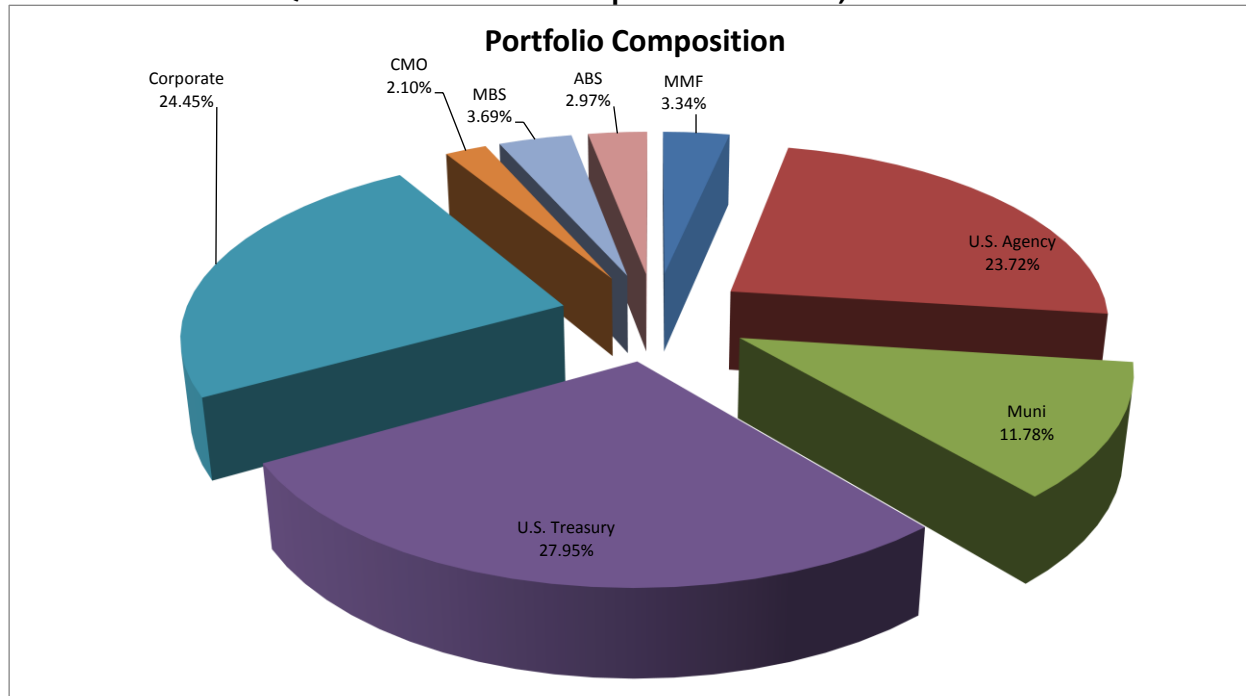
Portfolio Effective Maturity Distribution



Leon County
 Asset Allocation for the Cutwater Managed Portfolio
 Quarter Ended September 30, 2012

Asset Allocation	Assets	Percent of Portfolio	Permitted by Policy
Money Market Funds ⁽²⁾	506,972.96	0.66%	100%
Bankers Acceptances	-	0.00%	15%
Repurchase Agreements	-	0.00%	15%
Certificates of Deposit	-	0.00%	30%
Commercial Paper (CP)	2,047,477.26	2.68%	20%
U.S. Agency Notes	18,123,811.94	23.72%	100%
Municipal Notes	8,999,558.80	11.78%	35%
U.S. Treasury Notes	21,357,363.43	27.95%	100%
FNMA	-	0.00%	15%
FHLMC	-	0.00%	15%
FFCB	-	0.00%	15%
FHLB	-	0.00%	15%
Corporate Notes	18,682,880.75	24.45%	25%
Collateralized Mortgage Obligations (CMO)	1,603,292.64	2.10%	8%
Mortgage Backed Securities (MBS)	2,817,760.09	3.69%	35%
Asset Backed Securities (ABS)	2,269,312.72	2.97%	5%
SPIA	-	0.00%	50%
FMivT 0-2	-	0.00%	15%
FMivT 1-3	-	0.00%	15%
FLGIT	-	0.00%	15%
SBA	-	0.00%	50%
Total Portfolio	76,408,430.58	100.00%	

Leon County Asset Allocation for the Cutwater Managed Portfolio Quarter Ended September 30, 2012



Leon County

Ratings Distribution for the Cutwater Managed Portfolio Quarter Ended September 30, 2012

Short Term Rating Distribution

	Assets	Percent of Portfolio
A-1+	798,800.88	1.05%
A-1	1,248,676.38	1.63%
	2,047,477.26	2.68%

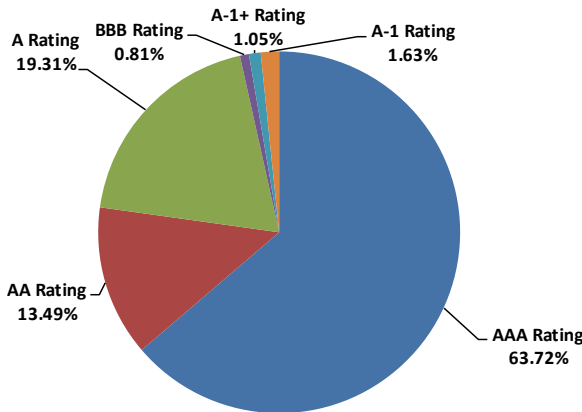
Long Term Rating Distribution

AAA Rating ⁽⁷⁾	48,689,603.52	63.72%
AA Rating	10,304,192.18	13.49%
A Rating	14,751,324.75	19.31%
BBB Rating	615,832.87	0.81%
BB Rating	-	0.00%
B Rating	-	0.00%
<B Rating	-	0.00%
	74,360,953.32	97.32%

Total Portfolio

	76,408,430.58	100.00%
--	---------------	---------

Portfolio Ratings Allocation



Leon County

Footnotes for Leon County's Internal and External Managed Investment Portfolio Quarter Ended September 30, 2012

1. Florida Treasury SPIA Effective Duration is from the September 30, 2012 Florida State Treasury Investment Trust Report, Page 4.
2. These limits pertain to allocation at time of purchase. The Finance Director shall have the option to further restrict or increase investment percentages from time to time based on market conditions. Eleven Million was liquidated from FMVT 1-3 and received on October 1, 2012 to fund disbursements.
3. Money Market Funds position held entirely in the Cutwater Managed Portfolio.
4. Quarterly Total Return weighted average based on investments with available total return calculations.
5. Cutwater Asset Management began managing Leon County's investment portfolio on June 1, 2010 (inception date).
6. Return and balance information for all non-Cutwater managed assets provided by external manager reports and Leon County.
7. Values based on period ended September 30, 2012 except as defined otherwise.
8. As of September 30 2012, the methodology used for US Treasury and US Agency ratings reflects the methodology used by the benchmarks.

Leon County Additional Disclosure

Additional Disclosure

1. Cutwater Investor Services Corp, which is an investment adviser registered with the SEC under the Investment Advisers Act of 1940, is providing advisory services for all funds designated within the Cutwater Managed Portfolio.
2. This presentation is intended for use in one-on-one presentations to the prospective client only. This presentation is not intended to be used as advertising nor is it for distribution for any other prospective clients.
3. Performance comparisons will be affected by changes in interest rates. Investment returns fluctuate due to changes in market conditions. **Past performance is no guarantee of future results.**