

Leon County
Investment Report
Quarter Ended March 31, 2013

Leon County
Table of Contents
Quarter Ended March 31, 2013

Summary Portfolio Review

	<u>Page</u>
Portfolio Performance and Characteristics for the Internal and External Investment Portfolio	4
Maturity Distribution for the Internal and External Investment Portfolio	5
Asset Allocation for the Internal and External Investment Portfolio	6
Ratings Distribution for the Internal and External Investment Portfolio	8

Cutwater Asset Management Portfolio Review

Portfolio Performance and Characteristics for the Cutwater Managed Portfolio	10
Maturity Distribution for the Cutwater Managed Portfolio	11
Asset Allocation for the Cutwater Managed Portfolio	12
Ratings Distribution for the Cutwater Managed Portfolio	14

Footnotes

15

Additional Disclosure

16

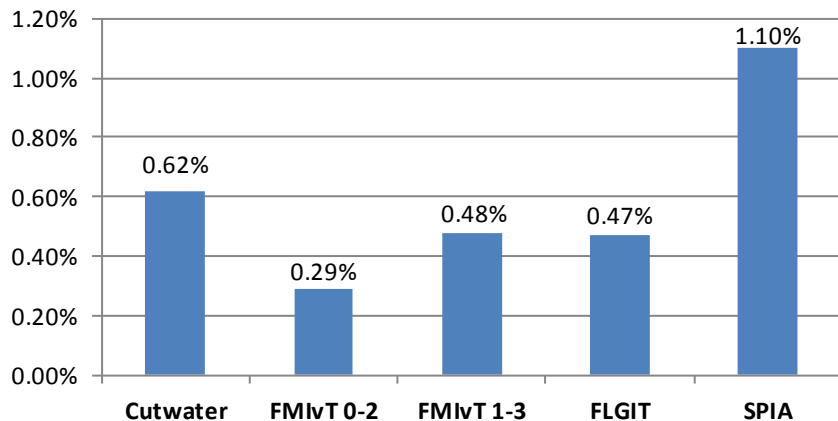
Leon County
Summary Portfolio Review
Quarter Ended March 31, 2013

Leon County

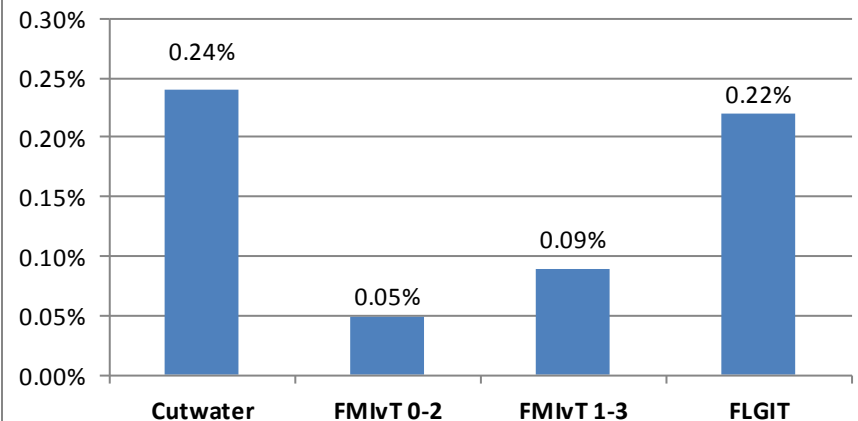
Portfolio Performance and Characteristics for the Internal and External Portfolio Quarter Ended March 31, 2013

Portfolio Name	Quarter End Balance	Quarterly Return	Yield	Effective Duration
Cutwater Managed Portfolio	76,730,602	0.24%	0.62%	1.77
Florida Municipal Investment Trust 0-2 Years (FMIVT 0-2)	49,836	0.05%	0.29%	0.75
Florida Municipal Investment Trust 1-3 Years (FMIVT 1-3)	11,661,216	0.09%	0.48%	1.69
Florida Local Gov Investment Trust (FLGIT)	15,559,692	0.22%	0.47%	1.72
Florida Treasury SPIA ⁽¹⁾	106,681,085	N/A	1.10%	2.43
Certificates of Deposit	0	N/A	N/A	N/A
State Board of Administration Pool (SBA)	0	N/A	N/A	N/A
Money Market-Holdings	0	N/A	N/A	N/A
	210,682,431	0.22%	0.84%	2.10

Yield as of March 31, 2013



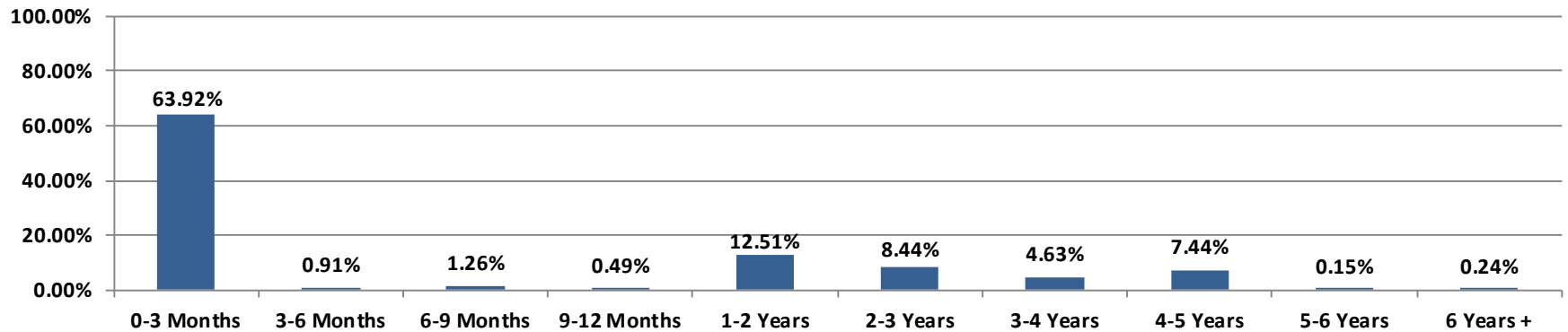
Quarterly Total Return



Leon County
Maturity Distribution for the Internal and External Portfolio
Quarter Ended March 31, 2013

<u>Maturity Distribution</u>	<u>Assets</u>	<u>Portfolio</u>
0-3 Months	134,669,939	63.92%
3-6 Months	1,927,721	0.91%
6-9 Months	2,653,686	1.26%
9-12 Months	1,034,067	0.49%
1-2 Years	26,366,856	12.51%
2-3 Years	17,790,803	8.44%
3-4 Years	9,748,222	4.63%
4-5 Years	15,668,881	7.44%
5-6 Years	318,723	0.15%
6 Years +	503,533	0.24%
	210,682,431	100.00%

Portfolio Maturity Distribution

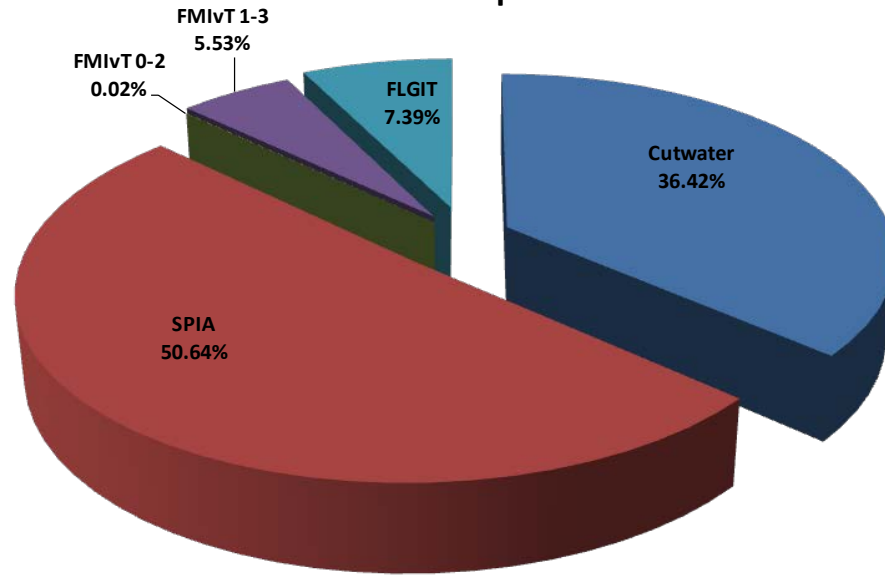


Leon County
 Asset Allocation for the Internal and External Portfolio
 Quarter Ended March 31, 2013

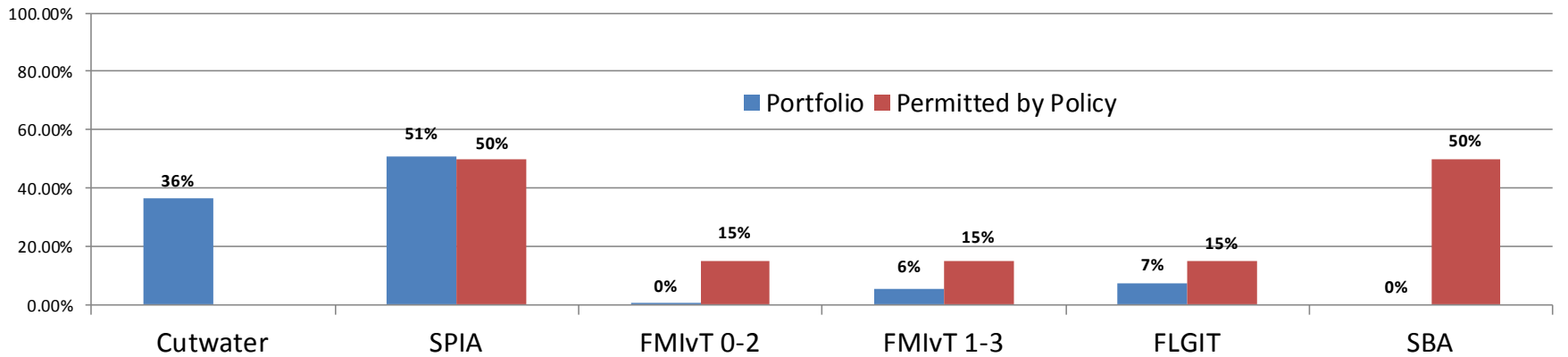
Asset Allocation	Assets	Percent of Portfolio	Policy ⁽²⁾
Cutwater Managed Portfolio	76,730,602	36.42%	NA
SPIA	106,681,085	50.64%	50%
FMIVT 0-2	49,836	0.02%	15%
FMIVT 1-3	11,661,216	5.53%	15%
FLGIT	15,559,692	7.39%	15%
SBA	-	0.00%	50%
Total Portfolio	210,682,431	100.00%	

Leon County Asset Allocation for the Internal and External Portfolio Quarter Ended March 31, 2013

Portfolio Composition



Portfolio vs. Investment Policy Asset Allocation



Leon County

Ratings Distribution for the Internal and External Investment Portfolio Quarter Ended March 31, 2013

Short Term Rating Distribution

A-1+
A-1

Assets	Percent of Portfolio
-	0.00%
-	0.00%
-	0.00%

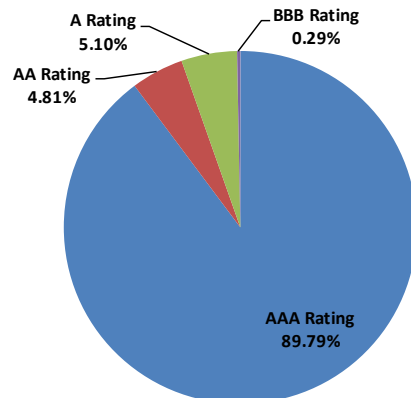
Long Term Rating Distribution

AAA Rating
AA Rating
A Rating
BBB Rating
BB Rating
B Rating
<B Rating

189,173,239	89.79%
10,138,326	4.81%
10,753,015	5.10%
617,851	0.29%
-	0.00%
-	0.00%
-	0.00%
210,682,431	100.00%
210,682,431	100.00%

Total Portfolio

Portfolio Ratings Allocation



Leon County
Cutwater Asset Management Portfolio Review
Quarter Ended March 31, 2013

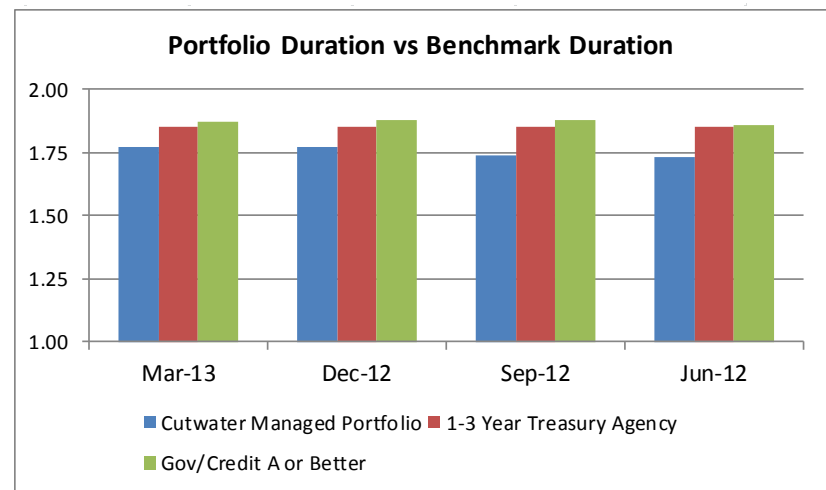
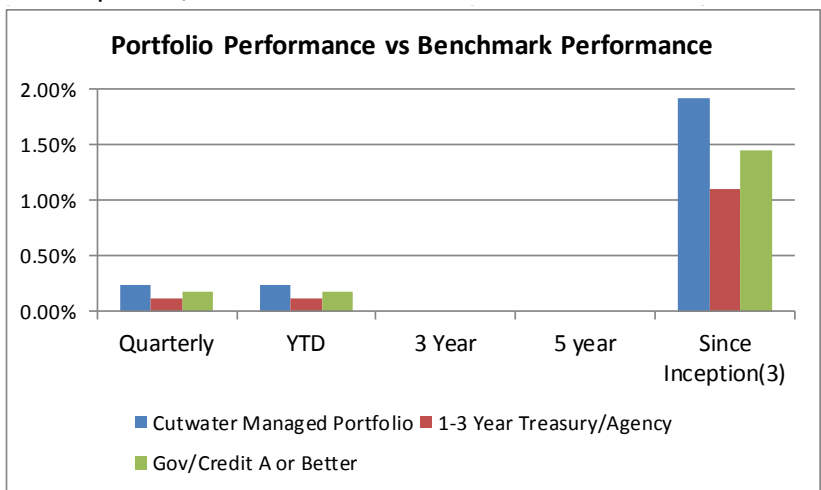
Leon County

Portfolio Performance and Characteristics for the Cutwater Managed Portfolio Quarter Ended March 31, 2013

Investment Portfolio	Ending Balance	Investment Portfolio	Ending Balance
Weighted Market Yield	0.62%	Market Value with Accrued	\$ 76,730,602.39
Weighted Yield on Cost	0.96%	Amortized Cost with Accrued	\$ 76,210,808.86
Weighted Coupon	1.38%	Accrued Interest	\$ 192,738.95

Performance	Quarterly	YTD	3 Year	5 year	Since Inception ⁽³⁾
Investment Portfolio	0.24%	0.24%			1.92%
1-3 Year Treasury/Agency Index	0.12%	0.12%			1.10%
US Corporate/Government - A or Better Index	0.18%	0.18%			1.45%

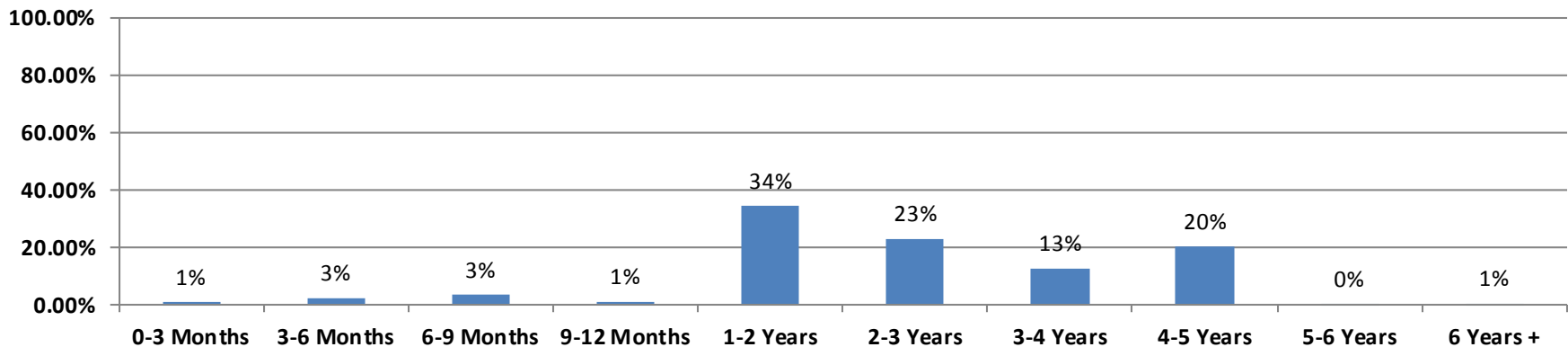
Duration	Mar-13	Dec-12	Sep-12	Jun-12
Investment Portfolio	1.77 Years	1.77 Years	1.74 Years	1.73 Years
1-3 Year Treasury/Agency Index	1.85 Years	1.85 Years	1.85 Years	1.85 Years
US Corporate/Government - A or Better Index	1.87 Years	1.86 Years	1.87 Years	1.88 Years



Leon County
Maturity Distribution for the Cutwater Managed Portfolio
Quarter Ended March 31, 2013

<u>Maturity Distribution</u>	<u>Assets</u>	<u>Percent of Portfolio</u>
0-3 Months	718,111	0.94%
3-6 Months	1,927,721	2.51%
6-9 Months	2,653,686	3.46%
9-12 Months	1,034,067	1.35%
1-2 Years	26,366,856	34.36%
2-3 Years	17,790,803	23.19%
3-4 Years	9,748,222	12.70%
4-5 Years	15,668,881	20.42%
5-6 Years	318,723	0.42%
6 Years +	503,533	0.66%
	<u>76,730,602</u>	<u>100.00%</u>

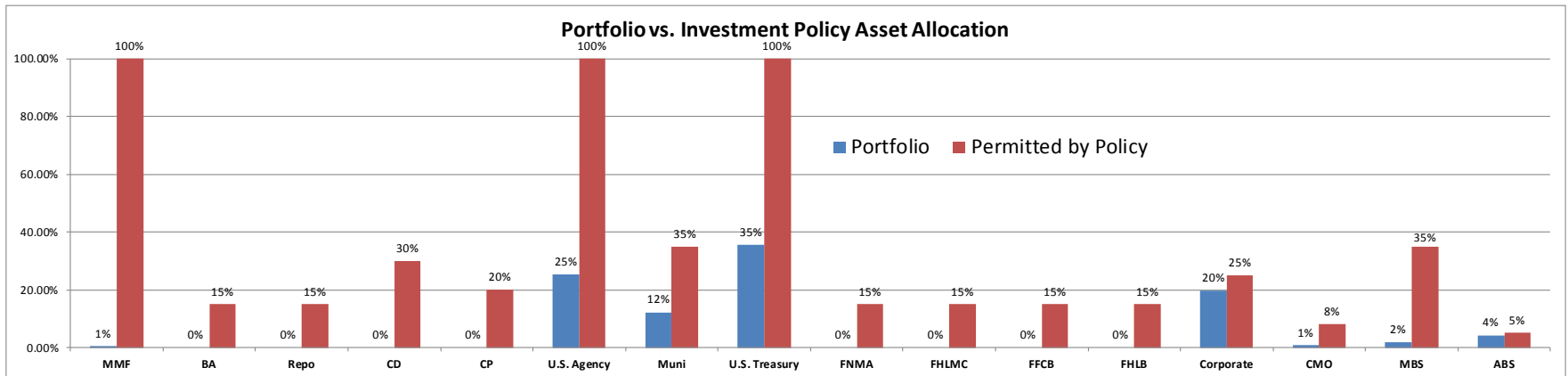
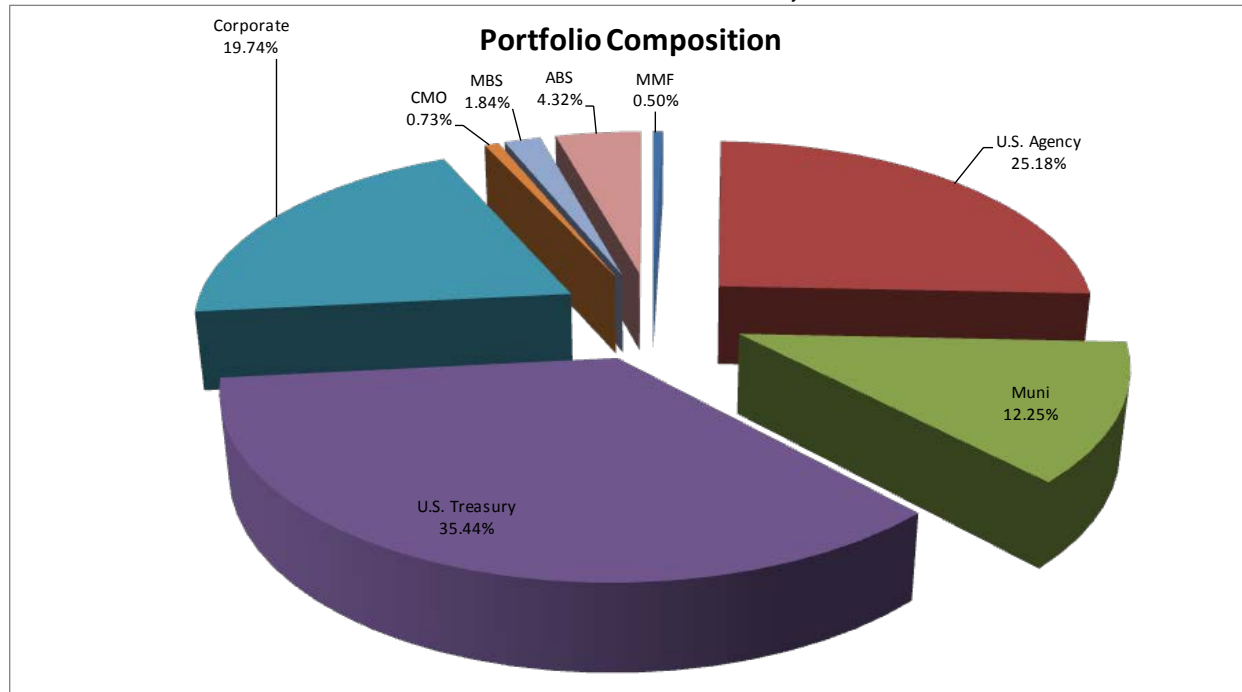
Portfolio Effective Maturity Distribution



Leon County
 Asset Allocation for the Cutwater Managed Portfolio
 Quarter Ended March 31, 2013

Asset Allocation	Assets	Percent of Portfolio	Permitted by Policy
Money Market Funds ⁽²⁾	364,197	0.47%	100%
Bankers Acceptances	-	0.00%	15%
Repurchase Agreements	-	0.00%	15%
Certificates of Deposit	-	0.00%	30%
Commercial Paper (CP)	-	0.00%	20%
U.S. Agency Notes	19,267,442	25.11%	100%
Municipal Notes	9,439,578	12.30%	35%
U.S. Treasury Notes	27,158,411	35.39%	100%
FNMA	-	0.00%	15%
FHLMC	-	0.00%	15%
FFCB	-	0.00%	15%
FHLB	-	0.00%	15%
Corporate Notes	15,206,514	19.82%	25%
Collateralized Mortgage Obligations (CMO)	560,099	0.73%	8%
Mortgage Backed Securities (MBS)	1,417,217	1.85%	35%
Asset Backed Securities (ABS)	3,317,145	4.32%	5%
Total Portfolio	76,730,602	100.00%	

Leon County Asset Allocation for the Cutwater Managed Portfolio Quarter Ended March 31, 2013



Leon County Ratings Distribution for the Cutwater Managed Portfolio Quarter Ended March 31, 2013

Short Term Rating Distribution

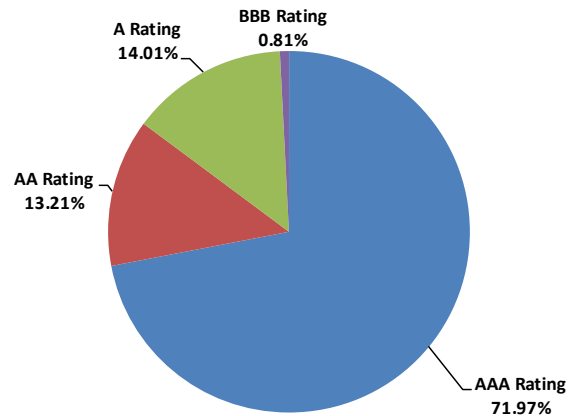
	Assets	Percent of Portfolio	Benchmark
A-1+	-	0.00%	0.00%
A-1	-	0.00%	0.00%
	-	0.00%	0.00%

Long Term Rating Distribution

AAA Rating ⁽⁸⁾	55,221,411	71.97%	79.12%
AA Rating	10,138,326	13.21%	8.77%
A Rating	10,753,015	14.01%	12.11%
BBB Rating	617,851	0.81%	0.00%
BB Rating	-	0.00%	0.00%
B Rating	-	0.00%	0.00%
<B Rating	-	0.00%	0.00%
	76,730,602	100.00%	100.00%
	76,730,602	100.00%	100.00%

Total Portfolio

Portfolio Ratings Allocation



Leon County

Footnotes for Leon County's Internal and External Managed Investment Portfolio Quarter Ended March 31, 2013

1. Florida Treasury SPIA Effective Duration is from the March 31, 2013 Florida State Treasury Investment Trust Report, Page 9.
2. These limits pertain to allocation at time of purchase. The Finance Director shall have the option to further restrict or increase investment percentages from time to time based on market conditions.
3. Cutwater Asset Management began managing Leon County's investment portfolio on June 1, 2010 (inception date).
4. Money Market Funds position held entirely in the Cutwater Managed Portfolio.
5. Quarterly Total Return weighted average based on investments with available total return calculations.
6. Return and balance information for all non-Cutwater managed assets provided by external manager reports and Leon County.
7. Values based on period ended March 31, 2013 except as defined otherwise.
8. As of September 30 2012, the methodology used for US Treasury and US Agency ratings reflects the methodology used by the benchmarks.

Leon County Additional Disclosure

Additional Disclosure

1. Cutwater Investor Services Corp, which is an investment adviser registered with the SEC under the Investment Advisers Act of 1940, is providing advisory services for all funds designated within the Cutwater Managed Portfolio.
2. This presentation is intended for use in one-on-one presentations to the prospective client only. This presentation is not intended to be used as advertising nor is it for distribution for any other prospective clients.
3. Performance comparisons will be affected by changes in interest rates. Investment returns fluctuate due to changes in market conditions. **Past performance is no guarantee of future results.**